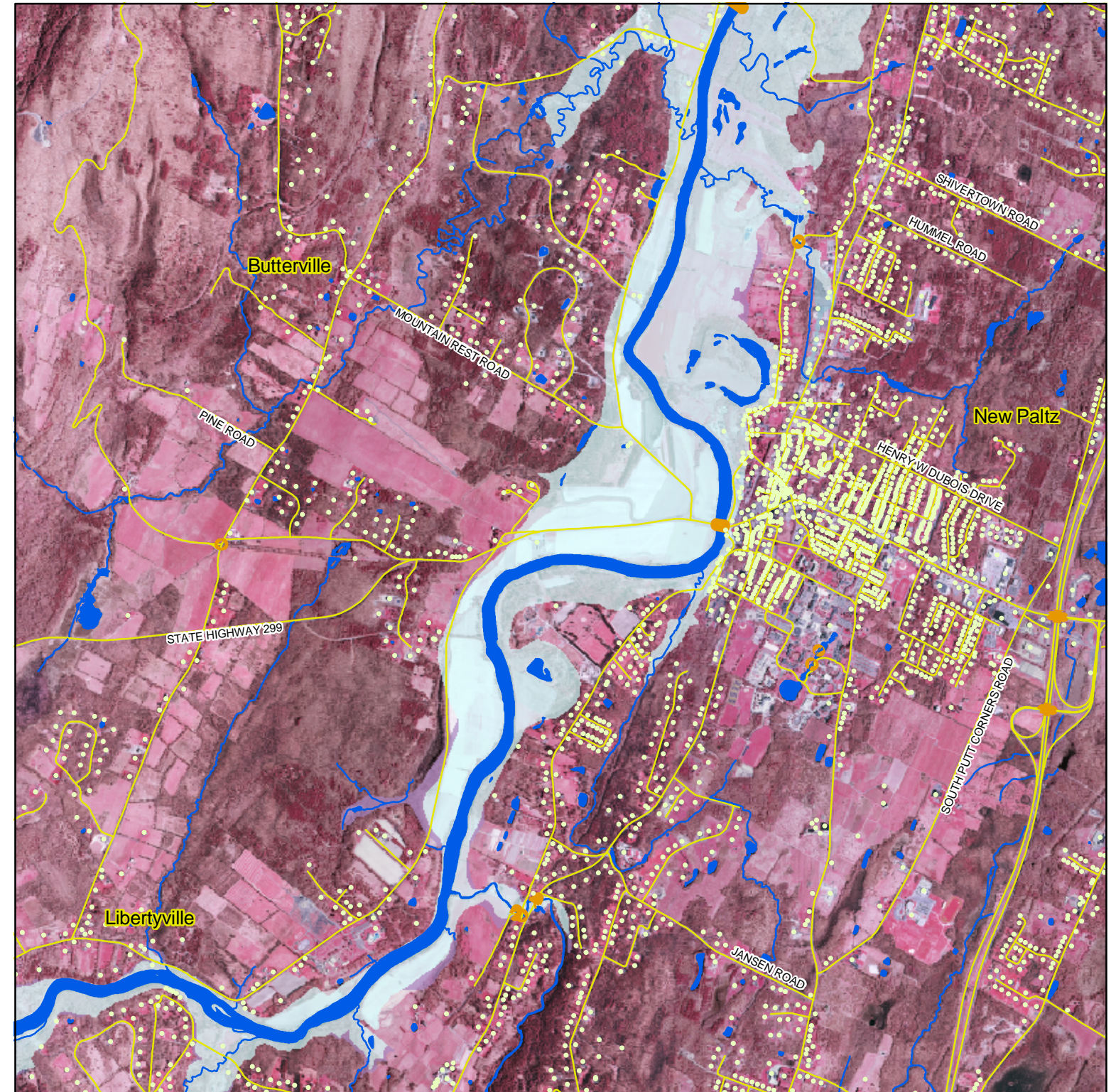



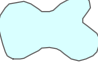

Ulster County Emergency Communications/ Emergency Management





Town of New Paltz - Walkkill River

The risk of flooding in Ulster County remains a significant emergency management concern. Whether caused by torrential downpours in the summer or ice flows melting in the springtime, the swollen waters pose serious risk to life and property.

It is essential to recognize the risks inherent in the affected properties and to incorporate appropriate land use planning into municipal decision making. To reduce the risks associated with the inevitable flooding in these areas, it is critical to avoid placing persons and personal property within the path of rising waters.



-  An area inundated by 100-year flooding, for which no Base Flood Elevations have been determined.
-  An area inundated by 100-year flooding, for which Base Flood Elevations have been determined
-  An area inundated by 500-year flooding; an area inundated by 100-year flooding with average depths of less than 1 foot or with drainage areas less than 1 square mile; or an area protected by levees from 100-year flooding.

-  Bridges
 -  Streams
 -  Roads
 -  Address Points
- 4,700** Feet

