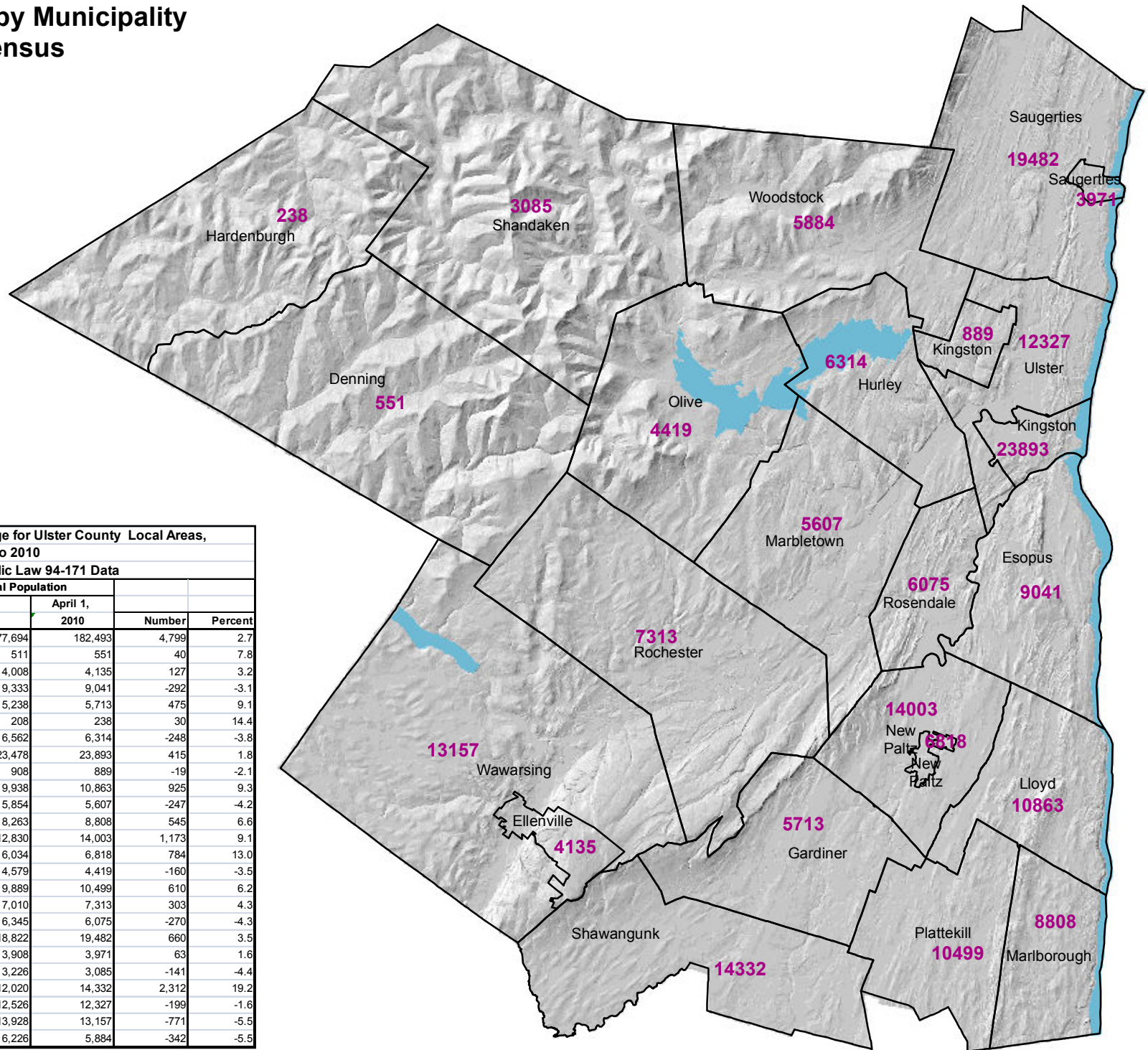


# Total Population by Municipality 2010 Census



**Table 2: Total Population Change for Ulster County Local Areas, 2000 to 2010**  
2010 Census: Public Law 94-171 Data

Geographic Area	Total Population		Number	Percent
	April 1, 2000	April 1, 2010		
<b>Ulster County</b>	177,694	182,493	4,799	2.7
Denning town	511	551	40	7.8
Ellenville village	4,008	4,135	127	3.2
Esopus town	9,333	9,041	-292	-3.1
Gardiner town	5,238	5,713	475	9.1
Hardenburgh town	208	238	30	14.4
Hurley town	6,562	6,314	-248	-3.8
Kingston city	23,478	23,893	415	1.8
Kingston town	908	889	-19	-2.1
Lloyd town	9,938	10,863	925	9.3
Marletown town	5,854	5,607	-247	-4.2
Marlborough town	8,263	8,808	545	6.6
New Paltz town	12,830	14,003	1,173	9.1
New Paltz village	6,034	6,818	784	13.0
Olive town	4,579	4,419	-160	-3.5
Plattekill town	9,889	10,499	610	6.2
Rochester town	7,010	7,313	303	4.3
Rosendale town	6,345	6,075	-270	-4.3
Saugerties town	18,822	19,482	660	3.5
Saugerties village	3,908	3,971	63	1.6
Shandaken town	3,226	3,085	-141	-4.4
Shawangunk town	12,020	14,332	2,312	19.2
Ulster town	12,526	12,327	-199	-1.6
Wawarsing town	13,928	13,157	-771	-5.5
Woodstock town	6,226	5,884	-342	-5.5

Source: 2010 Census: Public Law 94-171 Data